



SAFETY & ASSEMBLY INSTRUCTION

powerCON® HC | Locking 2P+PE AC appliance coupler



IMPORTANT SAFETY INSTRUCTION

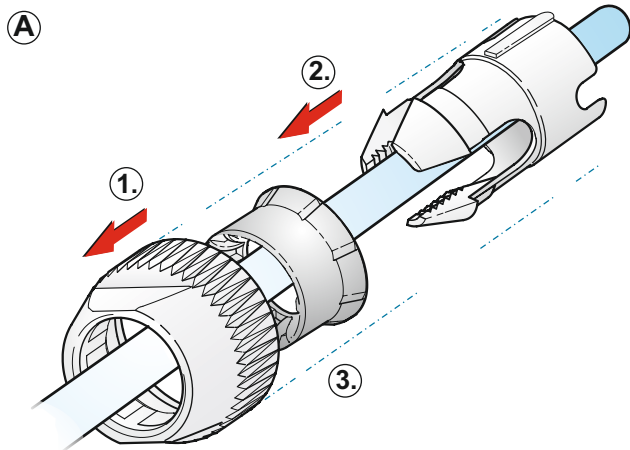
Caution: Connector without breaking capacity acc. IEC 61984 - must not be engaged or disengaged when under load or live.

Attention: Ne pas utiliser pour couper le courant.

FEATURES

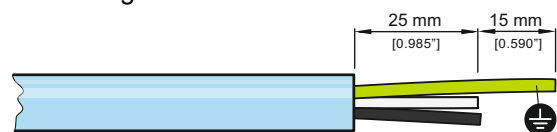
- 250 Vac, 32 Amp (at ambient temperatures up to 35°C) / 30 Amp for cUR
- Cable O.D. 17 mm (general range: 8.0 to 20.0 mm)
- Wiring: Cable Connector: Screw-type terminals for stranded wires 6.0 mm² (AWG 10)
Chassis Connector: Screw-type terminals for wires 6.0 mm² (AWG 10)

A ASSEMBLY INSTRUCTIONS | Cable Connectors

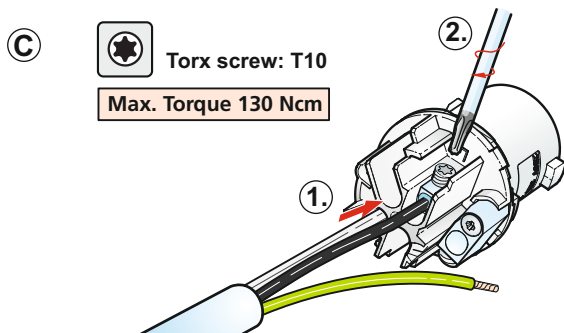
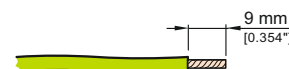


- A** Slide bushing (1) and chuck (2) onto the cable end.
If cable O.D.:
Less 15 mm please use reduction piece (3).

- B** Prepare cable as shown.
Consider excessive length of PE conductor for slackening.

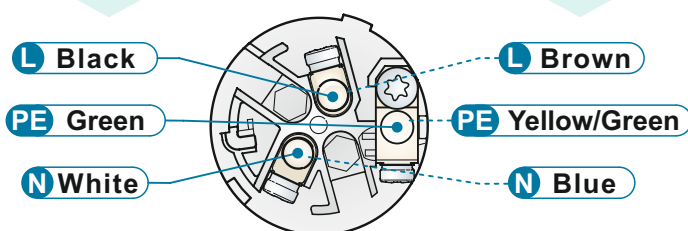


Strip the wires.



- Caution:**
The conductor cross section for the rated current is 6 mm² (10 AWG). In the exceptional case that the conductor cross section area is smaller as the rated cross section the maximum current load carrying capacity has to be assessed according to the limit of the conductor. Also it is advised to use wire end sleeves for smaller cross section areas.

Conductor colors according to color coding of North American cords or rest of the world.



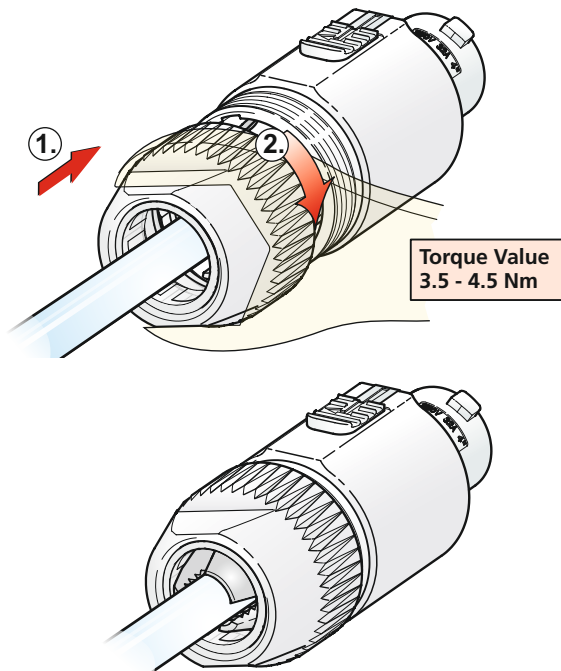
- C** Insert wires into terminals L, PE and tighten.

ATTENTION: Max torque 130 Ncm

Wiring (left):



D



D

1. Push insert and chuck into housing.
Important: Align the chuck and insert by positioning the nose into keyway.
2. Tighten bushing using open wrench 27 mm, Torque Value min. 3.5 - 4.5 Nm.

Assembled Connector

B ASSEMBLY INSTRUCTIONS | Chassis Connectors

A

Wiring:

Strip the wires.

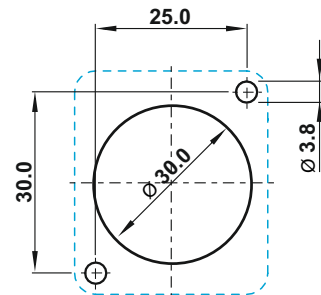
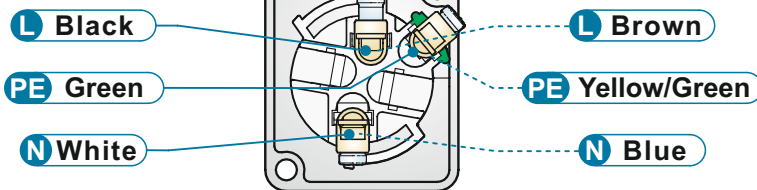


Insert wires to terminals and tighten.

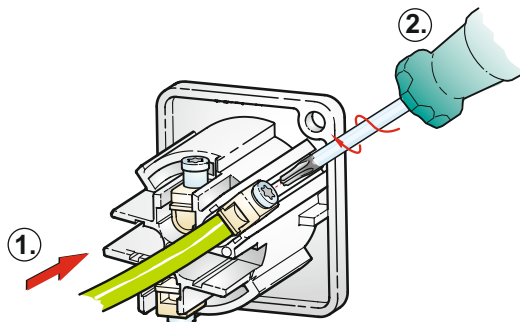
B

Panel cutout (rear side):

Conductor colors according to color coding of North American cords or rest of the world.



ATTENTION: Max torque 130 Ncm (2.)



i

More Information on the website

Find more details of opticalCON on www.neutrik.com.
<https://www.neutrik.com/en/neutrik/products/powercon-r/powercon-r-32-a>

