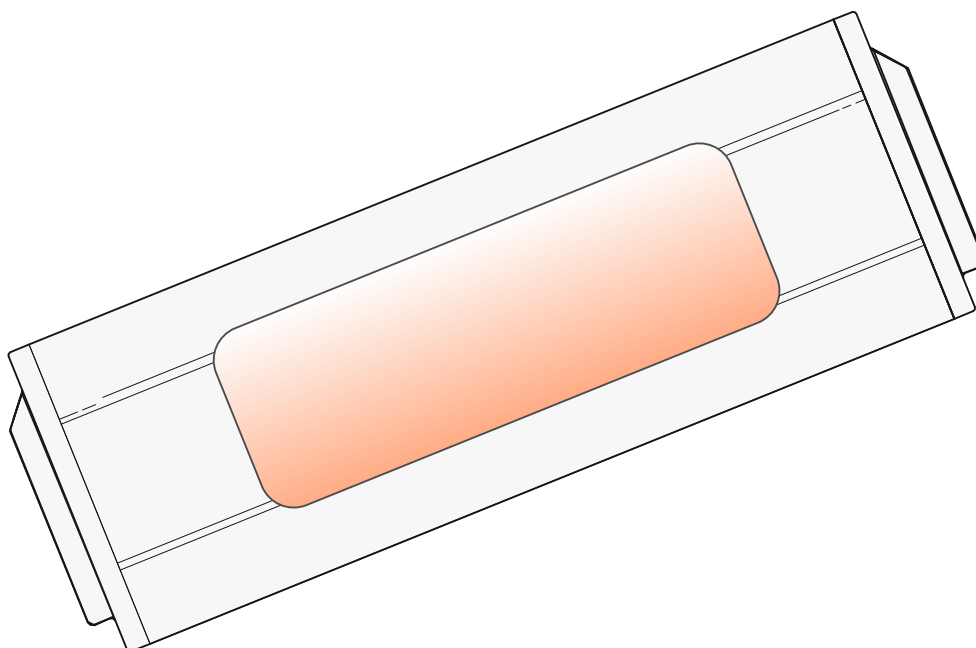




HANDLING INSTRUCTION

opticalCON® Coupler | MAINTENANCE





CAUTION: Laser radiation, do not stare into beam!

Do not disassemble opticalCON couplers. Sealing shutter mechanism of the opticalCON avoids contamination of the ferrule locked inside. Dust-proof design reduces maintenance intervals to a minimum.

opticalCON Coupler



DUO: NAO2*



QUAD: NAO4*

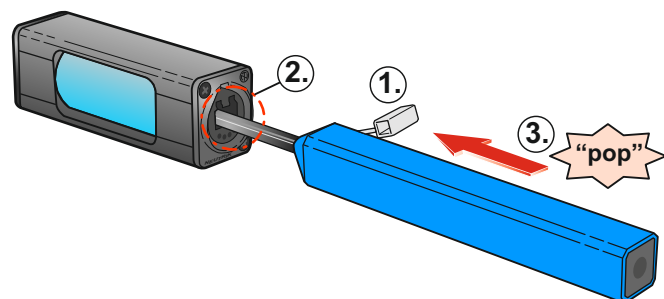


MTP®: NAO12* / NAO16* /
NAO24* / NAO48*

CLEANING

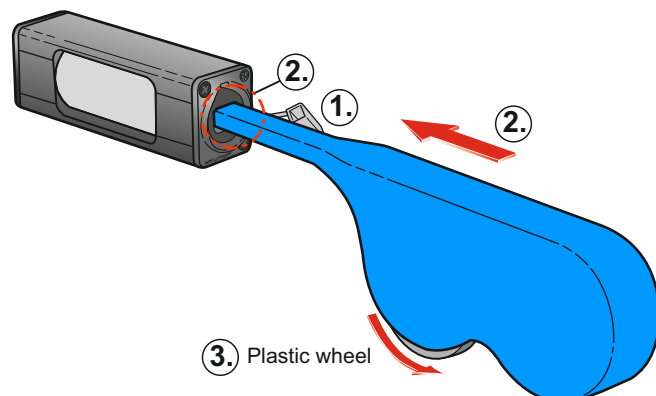
Depending on opticalCON coupler,
use corresponding DRY-cleaner:

- DUO FOCD-DC125
- QUAD FOCD-DC125
- MTP® FOCD-DCM



DUO & QUAD

1. Remove dust cap. Insert the stick of the cleaning device.
2. Make sure that the insertion position is on the bottom of the LC connector hole in order to hit the sealing shutter release bar.
3. Push the outer shell to start cleaning the LC connector end face.
A "pop" sound indicates end of cleaning process.
4. Remove cleaning device and put dust cap on the stick.



MTP®

1. Remove dust cap and insert the tip of the dry cleaner.
2. Guide the tip of the dry cleaner into the chassis housing.
3. Rotate the plastic wheel to start the cleaning procedure.
An endless lint free tape removes dust particle on the ferrule surface of the MTP® connector on the rear of the chassis.
4. After cleaning procedure, remove dry cleaner and cover the tip with the dust cap.



Document No.: BDA 358 V3
Date: 2025-07-30

Neutrik AG | LI-9494 Schaan

www.neutrik.com

Data subject to change without prior notice. © 2025 NEUTRIK®, NEUTRIK® are registered trademark of Neutrik AG. ALL RIGHTS RESERVED.

NEUTRIK®
A brand of the Neutrik Group