



PRODUCT MANUAL

powerCON® TRUE1®

NAC3F-TRUE1-S
NAC3F-TRUE1-L

1 APPLICATION & SAFETY INSTRUCTION

✓ IP 65 & IP 67 RATED

■ APPLICATION:

- The powerCON® TRUE1® system is certified as appliance couplers with breaking capacity according to IEC 60320-1, EN IEC 60320-1, UL 60320-1, CSA C22.2 No. 60320-1.
- It serves to supply power to an appliance and from an appliance to other equipment.
- To be installed by qualified person only.
- Appliance couplers acc. to IEC 60320-1 are suitable to be used in cord sets and interconnection cord sets acc. to IEC 60799

POWER IN

APPLIANCE INLET
NAC3MPX-TOP
NAC3MPX-WOT-TOP
NAC3MPX-TRUE1



CONNECTOR
NAC3F-TRUE1-S
NAC3F-TRUE1-L

POWER OUT

APPLIANCE OUTLET
NAC3FPX-TOP
NAC3FPX-WOT-TOP
NAC3FPX-ST-TOP
NAC3FPX-TRUE1



PLUG CONNECTOR
NAC3M-TRUE1-S
NAC3M-TRUE1-L

POWER IN / POWER OUT ► Combination

APPLIANCE INLET / APPLIANCE OUTLET
NAC3PX-TOP
NAC3PX-TRUE1



CONNECTOR
NAC3F-TRUE1-S
NAC3F-TRUE1-L

PLUG CONNECTOR
NAC3M-TRUE1-S
NAC3M-TRUE1-L

Products are in
compliance with:

IEC 60320-1
EN IEC 60320-1



UL 60320-1
CSA C22.2 No. 60320-1



Ratings:

16A 250V AC

20A 250V AC

Conductor cross section:

1.5 - 2.5 mm²

14 - 12 AWG

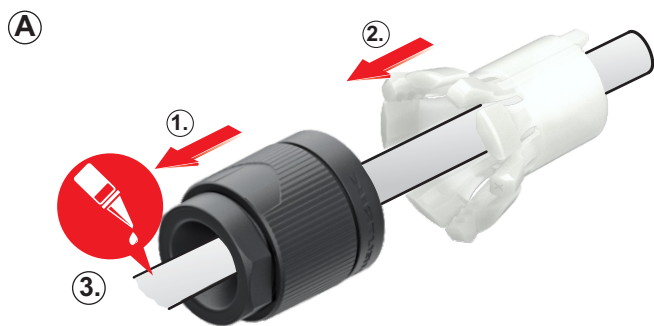
■ CABLE LIST

Approved cables:	3 x 1.5 mm ²	3 x 2.5 mm ²	
■ H07RN-F	-S	-L	
■ H05VV-F	-S	-S	

Approved cables:	14/3 AWG	12/3 AWG	
■ SOOW	-L	-L	
■ SJOOW	-S	-L	



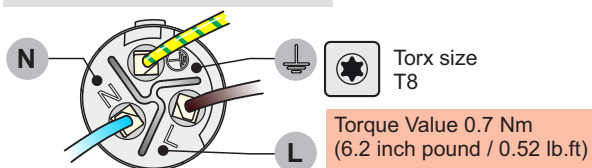
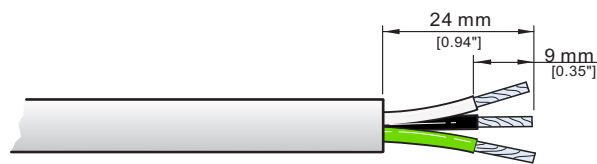
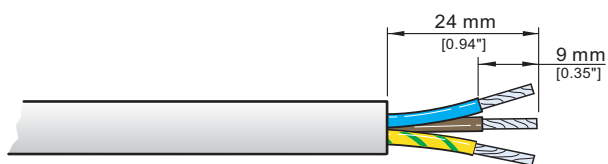
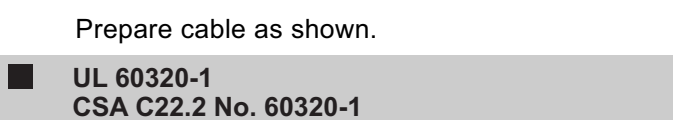
2 ASSEMBLY INFORMATION



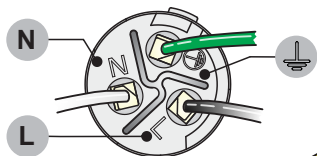
Place the bushing (1) and chuck (2) over the cable.

Important: Chuck and Bushing cannot be placed over the cable after the assembly of the insert.

(3) For easier assembly please use a cable lubricante.

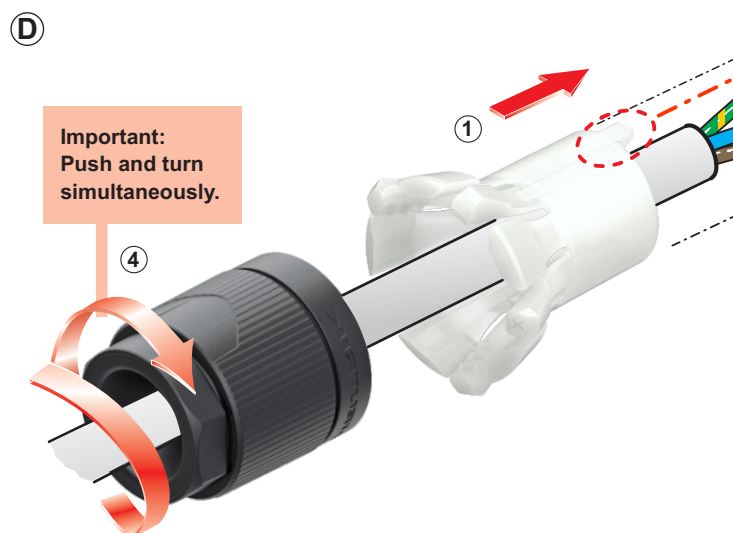


UL 60320-1
CSA C22.2 No. 60320-1



Slide the cable into the contacts and clamp with the screw with Torx size T8.

Typical Wiring	IEC 60320-1 EN IEC 60320-1	UL 60320-1 CSA C22.2 No. 60320-1
L ⇒	brown	black
N ⇒	blue	white
⏏ ⇒	green/yellow	green



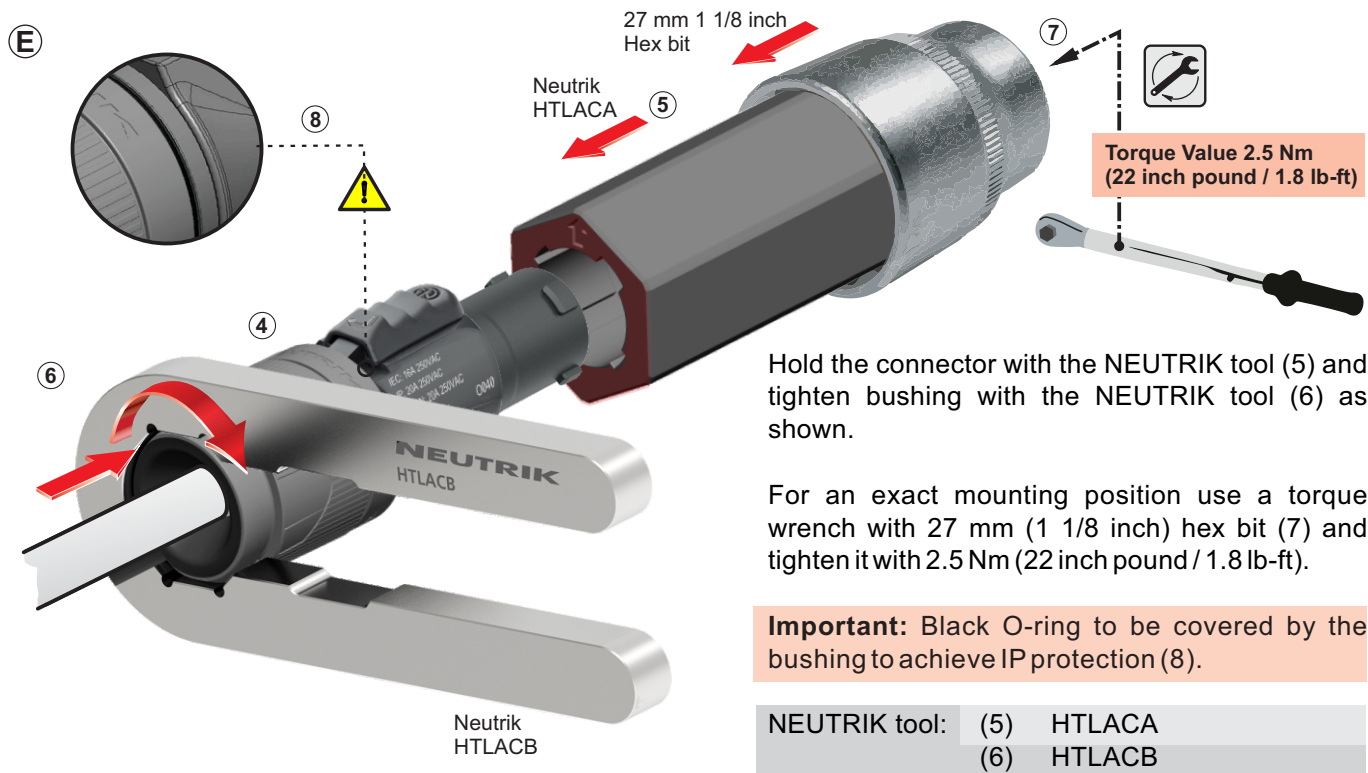
Important:
Push and turn
simultaneously.

Position chuck (1) on insert (2).

Slide insert (2) with chuck (1) together into housing (3).

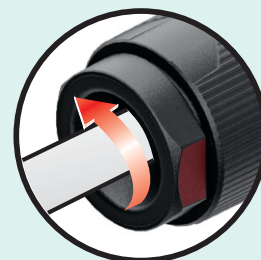
Important: Align the chuck by positioning the nose into keyway.

Slide bushing (4) over chuck (1).



3 FOR DISASSEMBLY

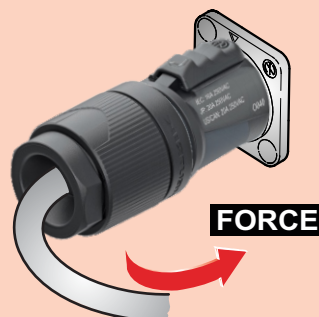
1. Use the Neutrik tool HTLACB.
2. Position the tool on the surfaces and open the clamping sleeve.



4 SAFETY INFORMATION

CAUTION

To ensure protection category, do not expose the connection to bending forces (e.g. do not attach loads to the cable, no free-dangling cable windings etc.).



SAFETY WARNING

For safety reasons the appliance couplers must be replaced in case of any broken parts or excessive wear and tear.



5 Application and Safety Instructions

A Assembly

- When assembling and processing the product, ensure the use of appropriate personal protective equipment.
- Neutrik components must only be assembled with designated and specified components.
- Replacement parts are suitable only when used in combination with the designated components. The product's characteristics are guaranteed only in the intended combination.

B Application

- The product is exclusively intended for installation in electronic equipment or similar devices.
- The product is not intended for use in medical applications.
- The product is not intended for use in potentially explosive or flammable environments.
- Appliance couplers are not intended for use as climbing aids. Caution: Electrical hazards!
- Rated values are marked on the product and the smallest packaging unit.
- Ensure that the connectors are either plugged in or protected against moisture with a suitable protective cap in potentially humid environments.

C Operation

- The safety of this product was evaluated according to standard specifications under laboratory conditions
- After installation in an electronic device or similar, the product safety in the intended application must be ensured by the respective party involved.
- Before plugging in, check the contact area for dry surfaces.
- Product surfaces may cause burns at elevated ambient temperatures. Ensure the use of appropriate protective equipment.
- The customer is responsible for ensuring that the device is de-energized when plugged in with male contact.
- Neutrik Products are only allowed to use with compatible products from Neutrik Group brands.
- The product is unsuitable for use by vulnerable consumers.
- Connectors and plug connectors complying with this part of IEC 60320-1, EN IEC 60320-1, UL 60320-1, CSA C22.2 No. 60320-1 are suitable for normal use at ambient temperatures not normally exceeding +40 °C, but their average over a period of 24 h does not exceed +35 °C, with a lower limit of the ambient air temperature of –5 °C.

D Cleaning

- Clean only with dry and lint-free materials or compressed air.
- The product must not be cleaned while under load. The product may only be cleaned while it is not connected to any voltage and without the use of cleaning agents.

E Damages

- Handle products with care.
- In case of visible damages, check the suitability of the product for use.