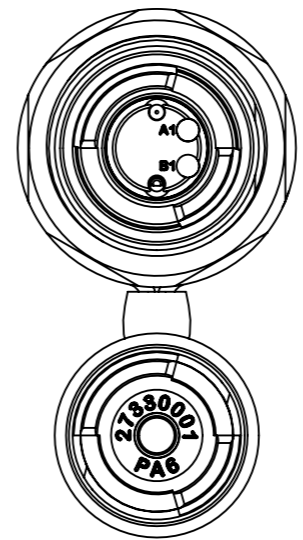
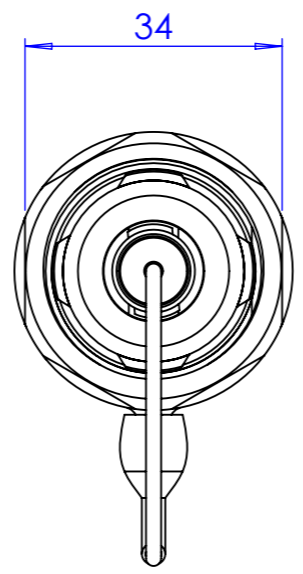
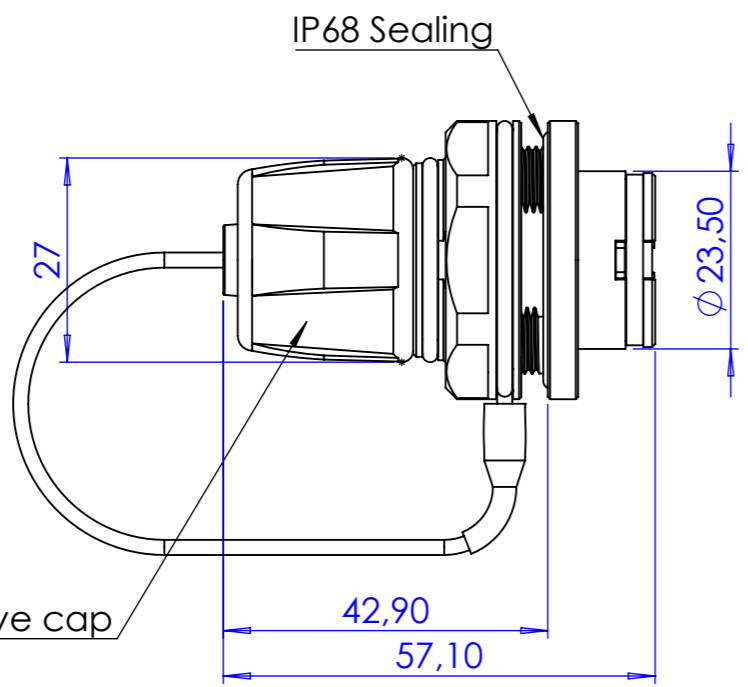
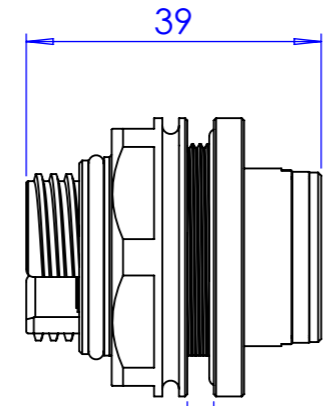


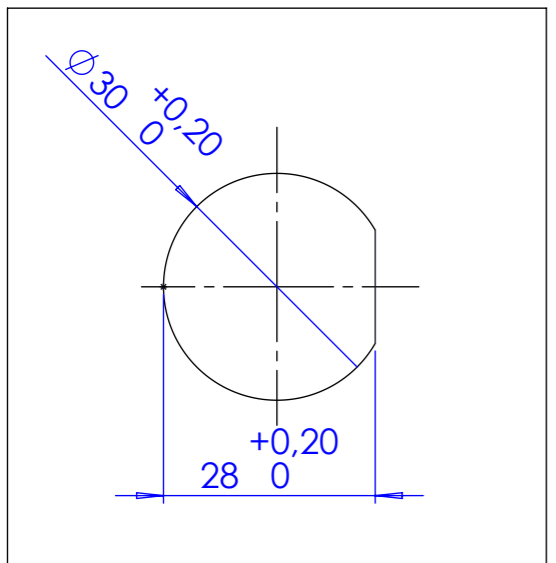
for 2x LC-Connector
MM 50/125



Protective cap

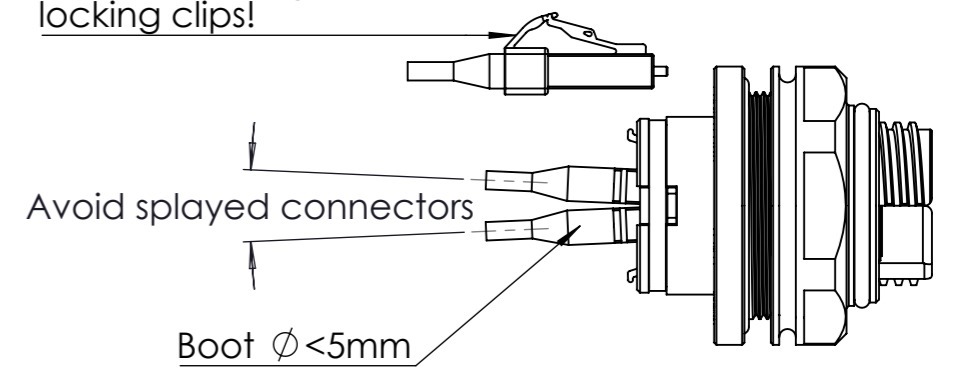


drilling pattern from the front



USE PROPERLY ALIGNED LC CONNECTORS ONLY

Before coupling, remove locking clips!



Avoid splayed connectors by using LCs without anti-snag collars and a boot diameter <math>< 5\text{mm}</math>! (e.g. original FIBERFOX patch-cable)

Sheet Number 1/1	Projection 	Scale 1:1	Format A3	Tolerancing ISO 2768-
Material g	Material addition	Weight 28.45 g	Volume cm ³	Created HeBo 09.08.2023
Material	Material addition	Modified	Approved HeBo	09.08.2023
Description NO2M4 JW-FG FF EBC25 bridgE Chassis 2CH MM OM4			ECN Number	Status
NEUTRIK		3D Model ID 41036432	Document ID 1036432	Revision 01