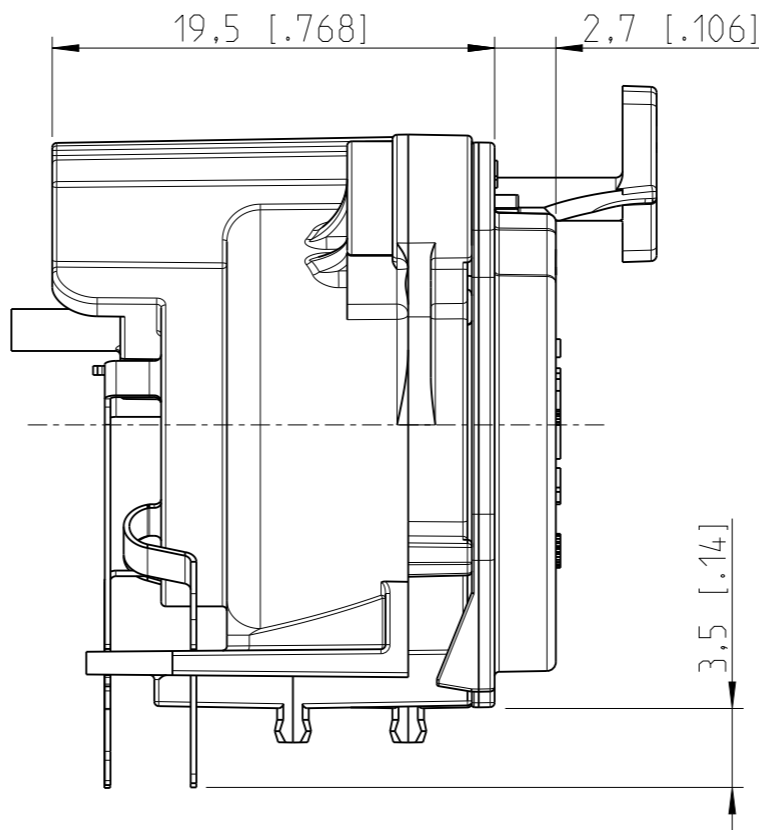
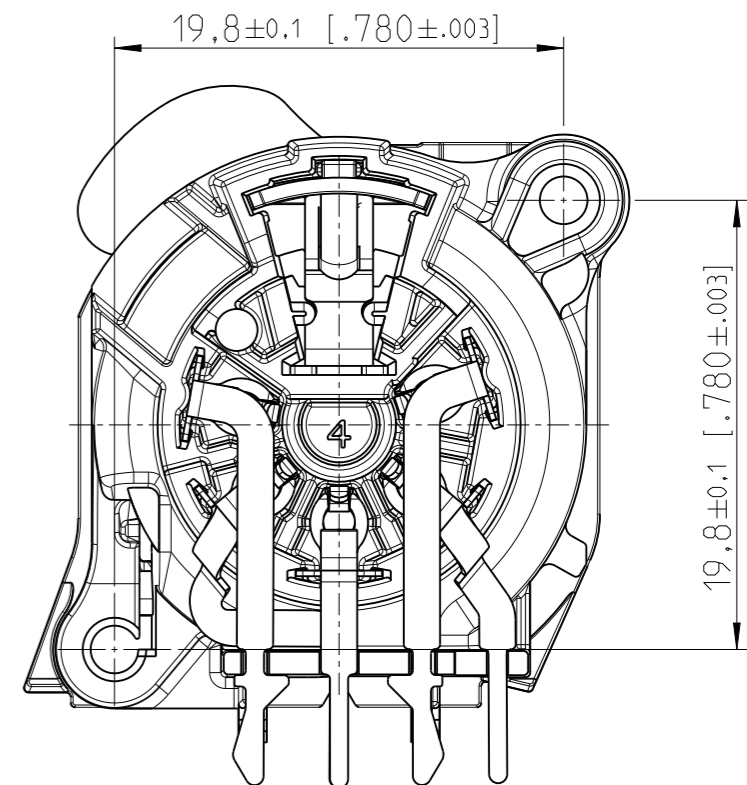


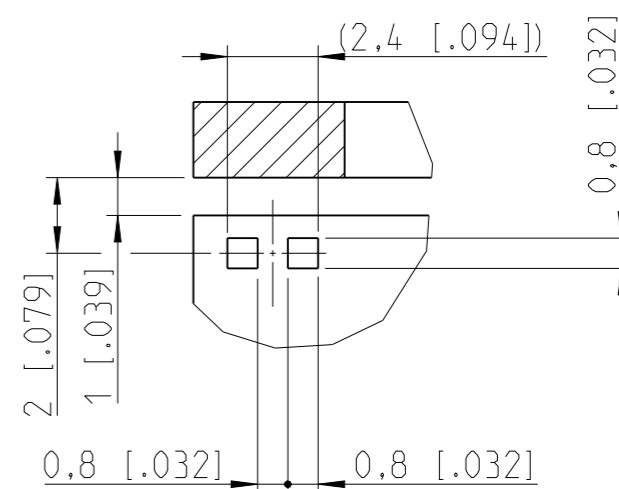
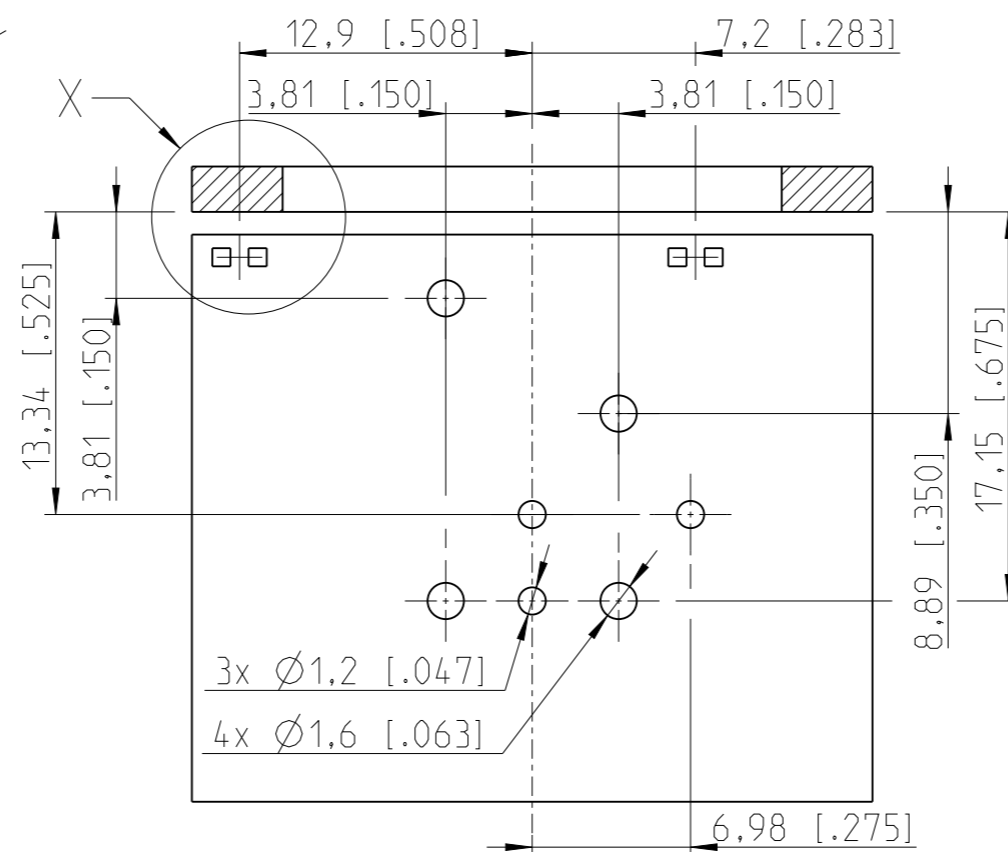
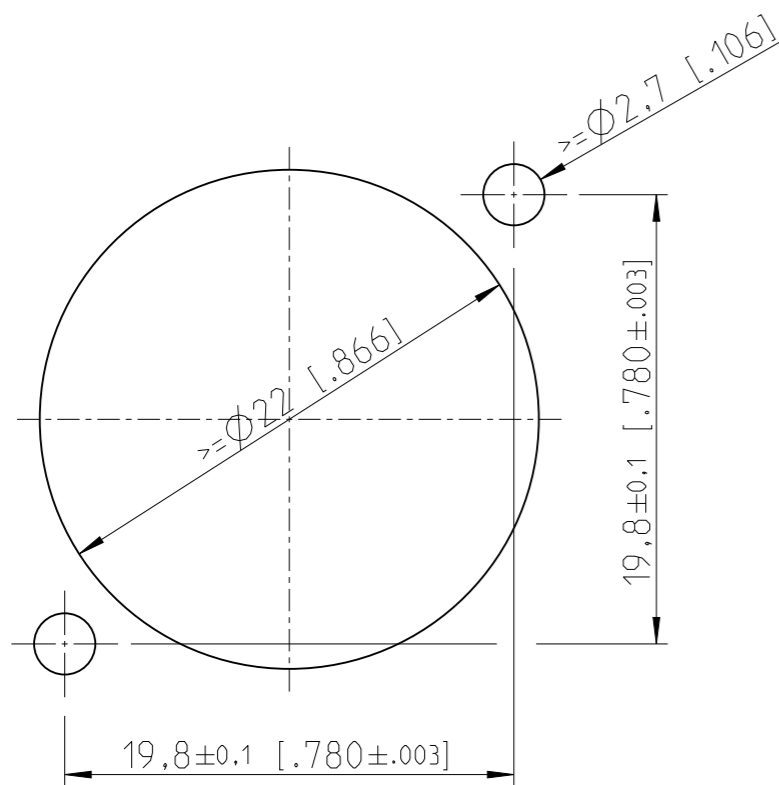
Frontplattenausschnitt (Rückseite)
Panel cut out (rear side)



Print-Bohrplan (Bestückungsseite)
PCB-Layout (component side)



Detail X
5:1 LED size: 0603 (max height: 0.8mm)
Recommended solder pad layout:



| | | | | | |
|---------------------------------|-----------------------|-------------------------|------------------|----------------------------|--|
| Sheet Number 1/1 | Projection ⊕ | Scale 3:1 | Format A3 | Tolerancing ISO 2768-mK | |
| ECN Number - | Created 30.06.2021 | | kez | | |
| Description ST-NC5FAH-LR-DAE | | | Modified n.ä. | n.ä. | |
| NEUTRIK | | | Status | | |
| 3D Model ID 30008966 | | Document ID 20003636 | Revision - | | |