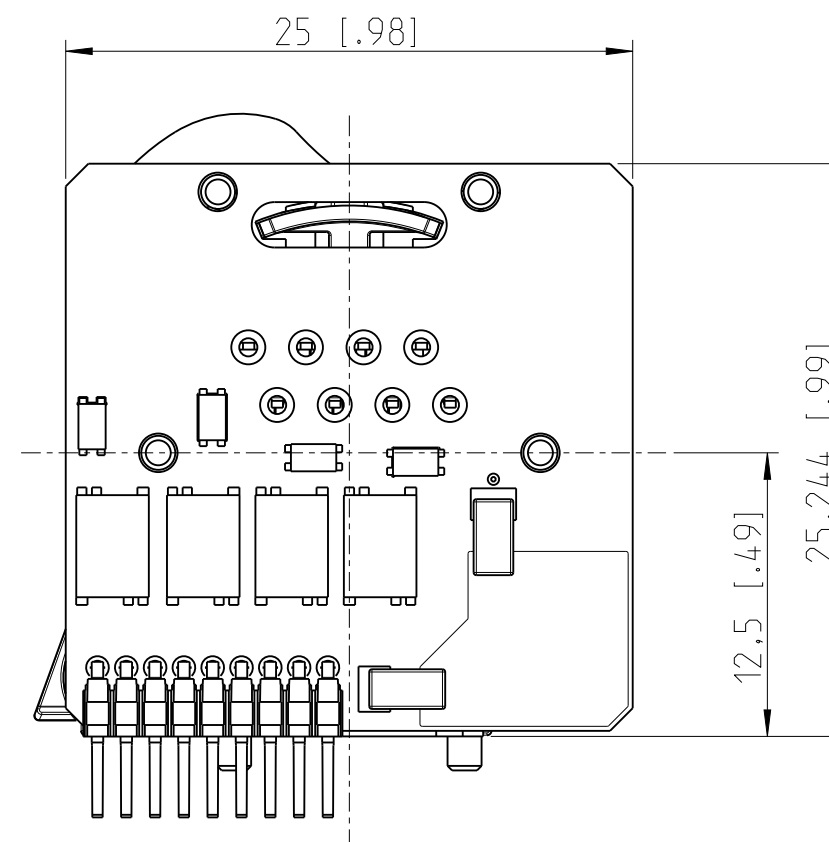
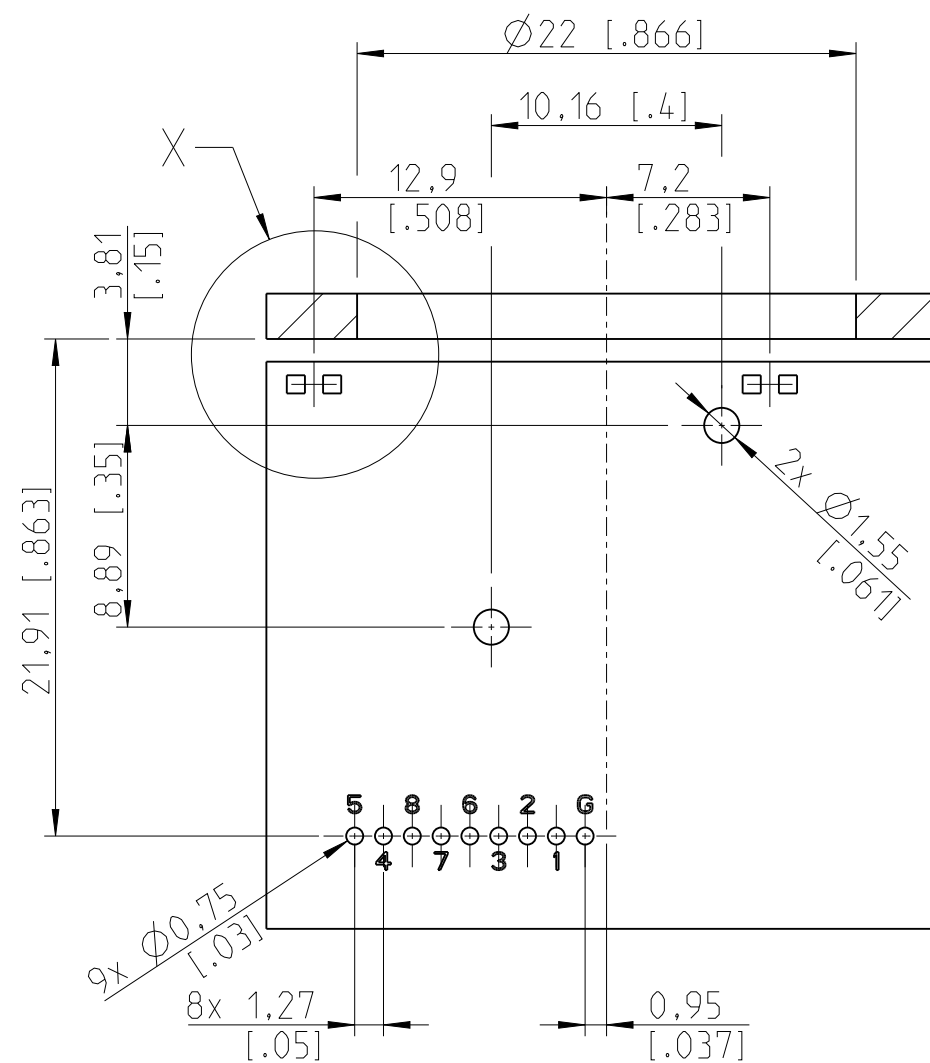
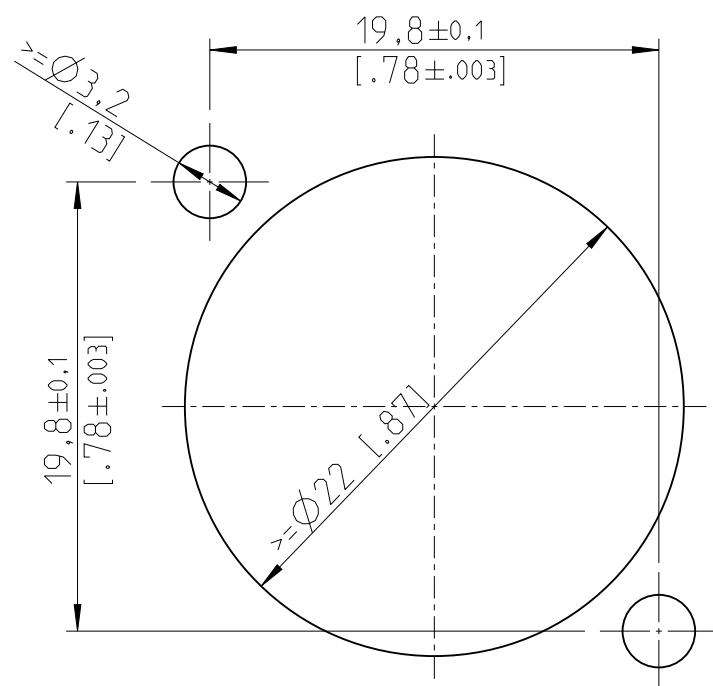


PCB-Layout (component side)

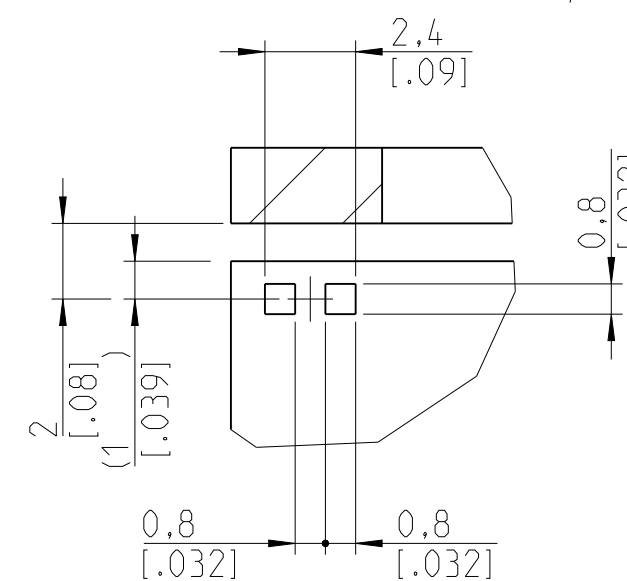


Panel cut out (rear side)



X
5:1

LED size: 0603 (max height: 0.8mm)
Recommended solder pad layout:



Sheet Number 1/1	Projection 	Scale 3:1	Format A3	Tolerancing ISO 2768-mK	
ECN Number -			Created 18.11.2021	Fritsch S.	
Description NE8FAH-M-GB-LR-DAE			Modified n.ä.	n.ä.	
			Approved 25.02.2022	Zechmann K.	
			Status Released		
NEUTRIK		3D Model ID 30009334	Document ID 20003789	Revision -	