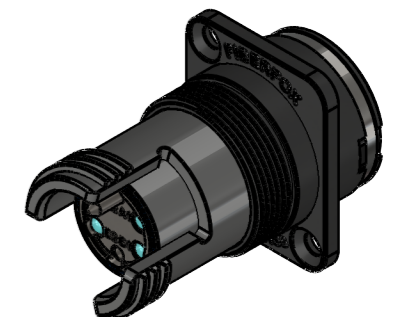
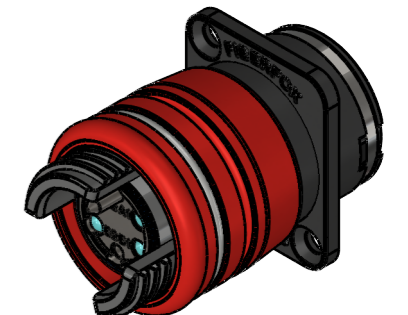
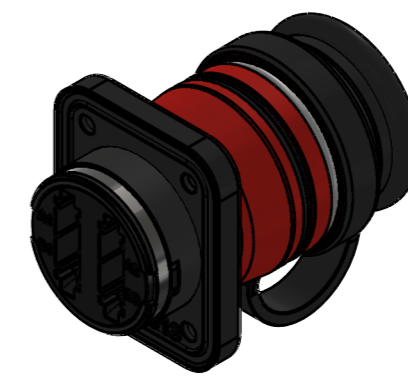
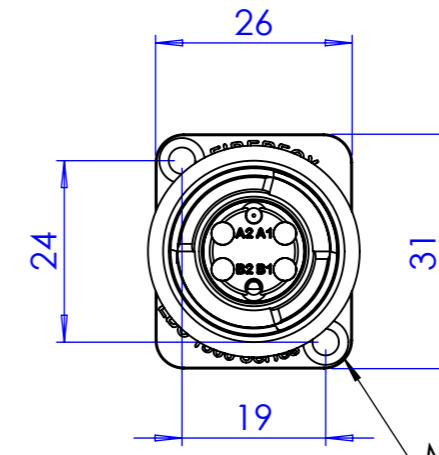
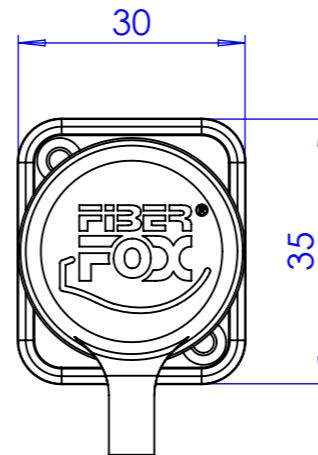
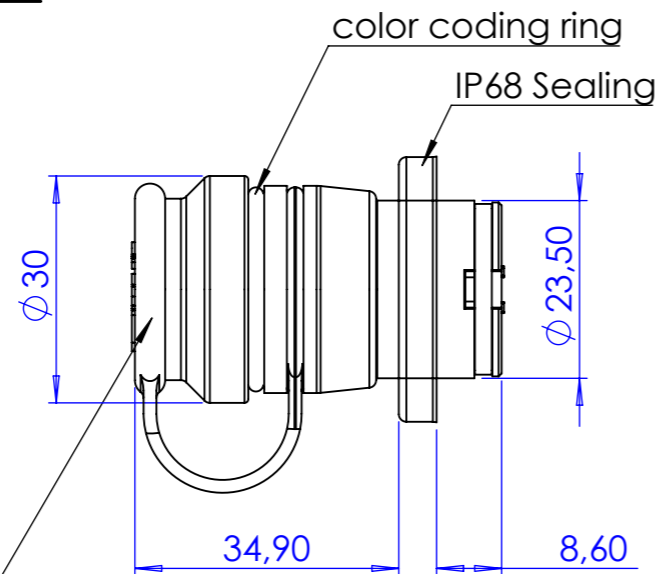
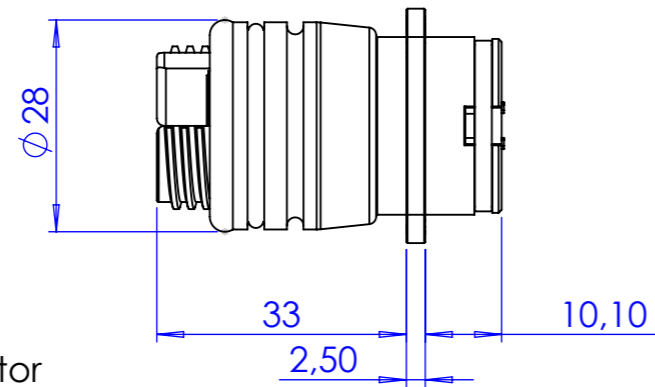
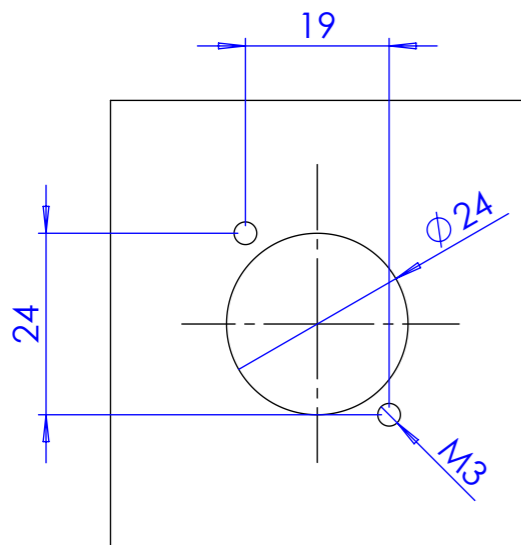


for 4x LC-Connector  
MM 50/125

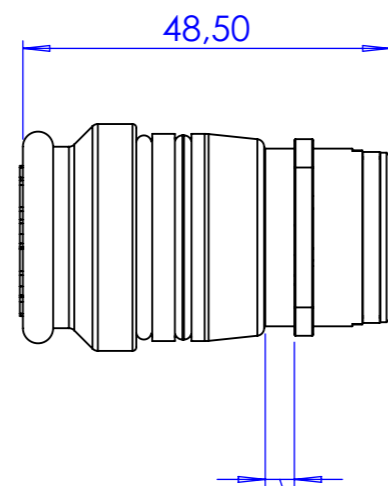
Protective cap



drilling pattern from the front



To meet the IPx8 specification, the supplied screws (DIN-EN-ISO 7046 M3x10 A2 black galvanized) must be used. These screws must be tightened to a torque of 1.5 Nm.



max. sheet thickness 1,5mm  
with IP68 turned sealing  
max. sheet thickness 3,5mm  
without IP68 sealing

**USE PROPERLY ALIGNED LC CONNECTORS ONLY**

Before coupling, remove locking clips!

Avoid splayed connectors

Boot  $\phi < 5\text{mm}$

Avoid splayed connectors by using LCs without anti-slag collars and a boot diameter  $< 5\text{mm}$ !  
(e.g. original FIBERFOX patch-cable)

To mount from behind, it is possible to unscrew the case holder.  
- Important, turn the IP68 Sealing!

Sheet Number 1/1	Projection 	Scale 1:1	Format A3	Tolerancing ISO 2768-m	
70 g	cm <sup>2</sup>	25.27 cm <sup>3</sup>	Created	HeBo	06.05.2021
Material			Modified		
Material addition			Approved	DiRo	06.05.2021
Description N04M4DW-FX FIBERFOX EBC15 bridgE Chassis coupler 4CH MM OM4			ECN Number		
NEUTRIK			3D Model ID 41027422	Document ID 1027422	Revision 01