



APPLICATION & ASSEMBLY INSTRUCTION

NAC3FX-W-TOP | powerCON® TRUE1® TOP

A APPLICATION INSTRUCTION

Application:

- The powerCON® TRUE1® system is certified as a connector with breaking capacity according IEC 60320-1.
- It is intended for use as an appliance coupler and interconnection coupler.
- It serves to supply power to an appliance and from an appliance to other equipment.
- To be installed by qualified person only.

CONNECTOR ASSIGNMENT:

APPLIANCE INLET

NAC3MPX-TOP
NAC3MPX-WOT-TOP

Power IN



NAC3FX-W-TOP
(Connector)

NAC3MX-W-TOP
(Plug connector)

APPLIANCE OUTLET

NAC3FPX-TOP
NAC3FPX-WOT-TOP
NAC3FPX-ST-TOP

Power OUT



NAC3FX-W-TOP
(Connector)

APPLIANCE INLET / OUTLET

► Combination

NAC3PX-TOP

Power IN



NAC3MX-W-TOP
(Plug connector)

Power OUT

powerCON® TRUE1® TOP line is full backward compatible with the preceding powerCON TRUE1 products.

Approval based:

VDE
EN 60320-1



UL 60320-1

CAN/CSA-C22.2 No. 60320-1



Rating:

250 V ac / 16 A

250 V ac / 20 A

Cable Type:

H05VV-F3G 1.0 mm², Length max. 2 m
H05VV-F3G 1.5 - 2.5 mm²
H07RN-F3G 1.5 mm²

SJTOW, SJOOW 3 x 12 AWG

Cable O.D.:

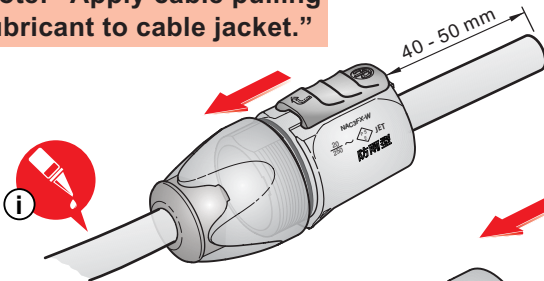
6.0 - 12.0 mm

6.0 - 12.0 mm

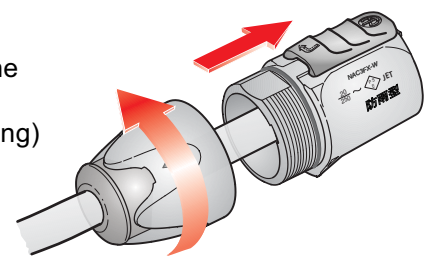
B ASSEMBLY INFORMATION

A Insert cable into the bushing and housing.

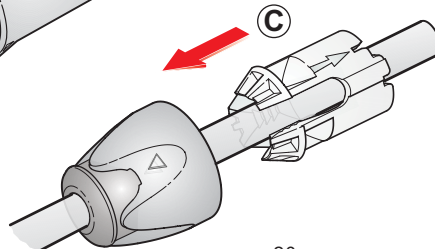
Note: "Apply cable pulling lubricant to cable jacket."



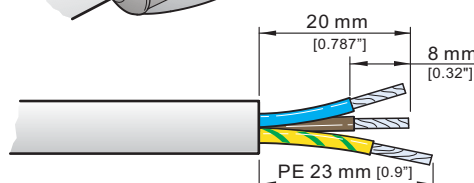
B Separate the housing from the bushing (cable remain in bushing)



C Place chuck over the cable.

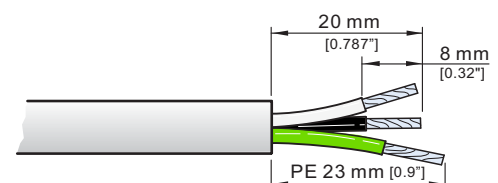


D Prepare cable as shown.



■ VDE
EN 60320-1

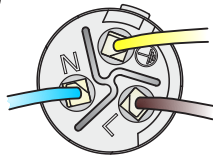
i Recommendation:
Wire Pulling Lubricant - LUB-I/0.95
from 3M™



■ UL 60320-1
CAN/CSA-C22.2 No. 60320-1



E

Torx size
T8

Torque Value 0.7 Nm

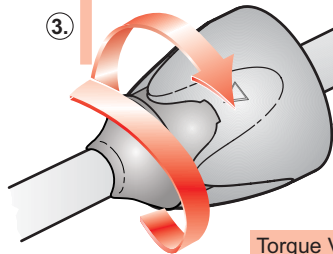
Slide the cable into the contacts and clamp with the screw with Torx size T8.

Wiring	VDE	UL
L ⇒	brown	black
N ⇒	blue	white
⏏ ⇒	green/yellow	green

F

Important:
Push and turn simultaneously.

③



①

②

Slide chuck onto insert (1) and then both into housing (2).

Important: Align the chuck by positioning the nose into keyway.

G

Wrench size
13 mm

④

PRESS FIRMLY

Torque Value 2.0 Nm

⑤



⑥

Slide the cable clamp (3) bushing up the cable and tighten it with the tool (4) as shown (5).

Important: Black O-ring to hide to achieve IP protection (6).

(Tool available: Art. No. HTAC)

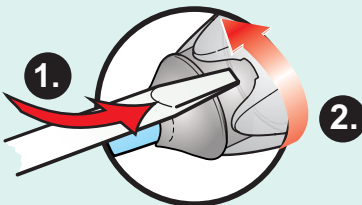
Find more details of powerCON TRUE1 TOP on www.neutrik.com.

C

FOR DISASSEMBLY

OPEN TWIST LOCK!

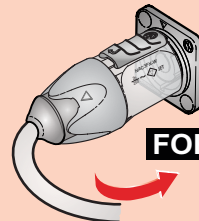
- ① Press with screw driver to unlock
- ② Turn bushing 360°.
- ③ Repeat step ①+② until bushing is unscrewed.



D

SAFETY INFORMATION

CAUTION



To ensure protection category, do not expose the connection to bending forces (e.g. do not attach loads to the cable, no free-dangling cable windings etc.).



SAFETY WARNING

For safety and certification reasons the connector must be replaced in case of any broken parts or excessive wear and tear.



Draft. Nr.: BDA 541 V3
Update: 2023-02-22

Neutrik AG | LI-9494 Schaan
www.neutrik.com

Data subject to change without prior notice. © 2023 NEUTRIK®. NEUTRIK®, powerCON are registered trademark of Neutrik AG. ALL RIGHTS RESERVED.