



NEUTRIK®

opticalCON®

Featured Products 2017

opticalCON® MTP®24

etherCON® CAT6A

etherCON® CAT5e

etherCON® Adapter

Asymmetric Push

powerCON® TRUE1

powerCON®

NEUTRIK®










opticalCON® Chassis

opticalCON® DUO	opticalCON® QUAD	opticalCON® MTP® 12	opticalCON® MTP® 24
<p data-bbox="311 1579 430 1602">NO2-4FDW-A</p>	<p data-bbox="678 1579 782 1602">NO4FDW-A</p>	<p data-bbox="1013 1579 1125 1602">NO12FDW-A</p>	<p data-bbox="1364 1579 1476 1602">NO24FDW-A</p>
<p data-bbox="151 1766 399 1789">Standard LC connector</p>	<p data-bbox="502 1766 750 1789">Standard LC connector</p>	<p data-bbox="813 1766 1125 1789">MTP® ELITE MALE connector</p>	<p data-bbox="1157 1766 1468 1789">MTP® ELITE MALE connector</p>

opticalCON® ADVANCED

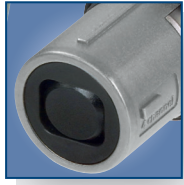
opticalCON® DUO	opticalCON® QUAD	opticalCON® MTP® 12	opticalCON® MTP® 24
 <p>NKO2S-A*</p> 	 <p>NKO4S-A*</p> 	 <p>NKO12SA*</p> 	 <p>NEW NKO24SA*</p> 
<ul style="list-style-type: none"> • 4 copper contacts • 2 fibers 	<ul style="list-style-type: none"> • 4 fibers 	<ul style="list-style-type: none"> • 12 fibers 	<ul style="list-style-type: none"> • 24 fibers

opticalCON® LITE

opticalCON® DUO LITE	opticalCON® QUAD LITE	opticalCON® MTP® 12 LITE	opticalCON® MTP® 24 LITE
 <p>NKO2M-L*</p> 	 <p>NKO4M-L*</p> 	 <p>NKO12M-L*</p> 	 <p>NEW NKO24M-L*</p> 
<ul style="list-style-type: none"> • 2 x 1.25 mm LC-ferrules 	<ul style="list-style-type: none"> • 4 x 1.25 mm LC-ferrules 	<ul style="list-style-type: none"> • 12 fiber - MTP® ferrule 	<ul style="list-style-type: none"> • 24 fiber - MTP® ferrule



Push-pull locking



Spherical shutter



24-channel MTP®



Color coded cable connector

opticalCON® MTP® 24 ADVANCED

opticalCON® MTP® 24 LITE



NKO24M-A*



NKO24M-L*

- Ruggedized and dirt-protected 24-channel fiber optic connection system
- For point-to-point multichannel routing based on MTP® technology
- Cable connector features rugged metal housing and heavy-duty cable retention
- Spherical shutter guarantees low maintenance
- Dust and water resistant according to IP65 in mated condition
- Easy to clean, no special tools required
- Reliable Push-Pull locking mechanism
- Cable connector comes pre-assembled with a choice of mobile field cables
- Wiring Type A

- 24-channel MTP® based fiber optic connection system
- Waterproof acc. to IP65 safety standard in mated condition
- Recommended for multi-signal transmission
- Push-pull locking mechanism
- Custom color coding
- Rugged housing
- Rubber protection cap
- Compatible with standard opticalCON ADVANCED NO24FDW-A chassis



Rubber sealing gasket



Rear MTP® connection



FOCD-STD for opticalCON DUO



FOCD-STQ for opticalCON QUAD



FOCD-STM for opticalCON MTP®

opticalCON® MTP® 24 Chassis

NEW



NO24FDW-A with SCDP-0

- Ruggedized and dirt-protected 24-channel fiber optic connection system
- For point-to-point multichannel routing
- Laser protective metal shutter seals dust proof with two-component rubber gasket
- Dust and water resistant according to IP65 in mated condition
- Accommodates standard MTP® ELITE MALE connectors on the rear for simple installation
- Rubber sealing gasket

opticalCON® Service Tools

NEW



FOCD-STM

Based on various customer requests we created new Service tools to inspect and clean our opticalCON cable connectors easily. The service tool is well-suited for all conventional LC or MTP® inspection tips and cleaning sticks.

- Provides proper alignment to enhance inspection and cleaning procedure
- Lockable with opticalCON cable connector
- Compatible with conventional cleaning and inspection equipment

Ordering Information for opticalCON®



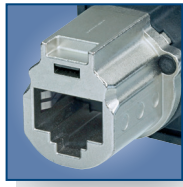
→ Part Number Generator

Ordering Information

FOCD-STD	Service tool for opticalCON DUO
FOCD-STQ	Service tool for opticalCON QUAD
FOCD-STM	Service tool for opticalCON MTP®



Rugged diecast shell



Feedthrough



IDC version



IP protected

etherCON® CAT6A Series



NE8MX6



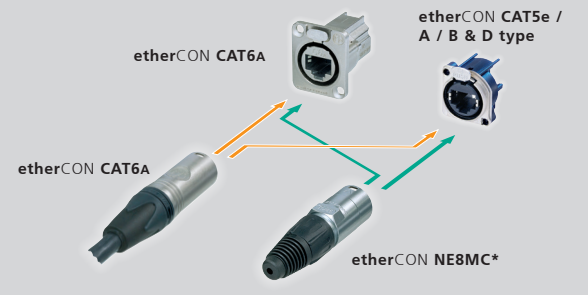
NE8FDX-P6



NE8FDX-Y6-W

- Ruggedized connector range with CAT6A component compliance according to ISO / IEC 11801 respectively EN50173-1 and CAT6A according to TIA / EIA 568-C.2
- D-size chassis connector for IDC self-termination or as feedthrough adapter
- IP 65 protected version available
- PoE+ compliant according to 802.3at Type2
- Downwards compatible with the existing etherCON CAT5 range

CAT6A / CAT5* compatibility:



Ordering Information

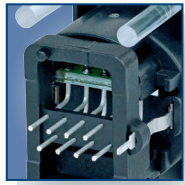
NE8MX6	etherCON cable connector CAT6A, nickel plating, ≥ AWG 24, Insulation diameter: > 1.10 - 1.60 mm
NE8MX6-B	etherCON cable connector CAT6A, black plating, ≥ AWG 24, Insulation diameter: > 1.10 - 1.60 mm
NE8MX6-T	etherCON cable connector CAT6A, nickel plating, ≤ AWG 24, Insulation diameter: > 0.85 - 1.10 mm
NE8MX6-B-T	etherCON cable connector CAT6A, black plating, ≤ AWG 24, Insulation diameter: > 0.85 - 1.10 mm
NE8FDX-P6	etherCON chassis CAT6A shielded feedthrough, nickel plating
NE8FDX-P6-B	etherCON chassis CAT6A shielded feedthrough, black plating
NE8FDX-Y6	etherCON chassis CAT6A shielded IDC, nickel plating
NE8FDX-Y6-B	etherCON chassis CAT6A shielded IDC, black plating
NE8FDX-P6-W	etherCON chassis CAT6A shielded feedthrough, with integrated rubber sealing cap, IP 65
NE8FDX-Y6-W	etherCON chassis CAT6A shielded IDC, with integrated rubber sealing cap, IP 65

Accessories

HX-CAT6A	Parallel press tool CAT6A
----------	---------------------------



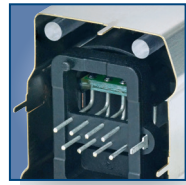
Horizontal PCB



Vertical PCB with lightpipes



Locking release tab



Shielded version

etherCON® CAT5e PCB Receptacle



NE8FAH-C5



NE8FBH-C5-LED



NE8FBV-C5-LED



NE8FBV-C5-LED-S

- Space saving A or B type receptacles - horizontal or vertical PCB design available
- Vertical PCB design at 24 mm distance to front panel – fits the widely accepted industry standard dimension for XLRs, 1/4" jacks etc.
- PoE+ compliant according to 802.3at Type2
- CAT5e performance according to ISO / IEC 11801 and TIA / EIA 568-C.2
- Shielded or non-shielded versions available
- Two types of light pipes available to accommodate through hole LEDs or SMD-LEDs
- Accommodates rugged etherCON NE8MC* cable carriers or any standard RJ45 plug

Ordering Information

NE8FAH-C5	etherCON A type horizontal PCB CAT5e
NE8FBH-C5	etherCON B type horizontal PCB CAT5e
NE8FBH-C5-S	etherCON B type horizontal PCB CAT5e with shielding
NE8FBH-C5-LED	etherCON B type horizontal PCB CAT5e through hole LED
NE8FBH-C5-LED1	etherCON B type horizontal PCB CAT5e SMD LED
NE8FBH-C5-LED-S	etherCON B type horizontal PCB CAT5e through hole LED with shielding
NE8FBH-C5-LED1-S	etherCON B type horizontal PCB CAT5e SMD LED with shielding
NE8FAV-C5	etherCON A type vertical PCB CAT5e
NE8FBV-C5	etherCON B type vertical PCB CAT5e
NE8FBV-C5-S	etherCON B type vertical PCB CAT5e with shielding
NE8FBV-C5-LED	etherCON B type vertical PCB CAT5e through hole LED
NE8FBV-C5-LED1	etherCON B type vertical PCB CAT5e SMD LED
NE8FBV-C5-LED-S	etherCON B type vertical PCB CAT5e through hole LED with shielding
NE8FBV-C5-LED1-S	etherCON B type vertical PCB CAT5e SMD LED with shielding



Rugged diecast shell



IP65 Protected in mated condition

etherCON® CAT6A Adapter

NEW



NE8FFX6-W

etherCON CAT6A feedthrough coupler for cable extensions

We are pleased to introduce the latest extension of our CAT6_A portfolio, the CAT6_A feedthrough adapter. With this revolutionary new design we set a groundbreaking new standard for a ruggedized adapter solution. The new adapter features the 10 GBit bandwidth as well as ingress protection class IP65.

- Ruggedized coupler with CAT6_A component compliance according to ISO/IEC 11801 and TIA/EIA 568-C.2
- IP65 protected when mated with NE8MX6*
- Accommodates standard RJ45 plug
- Revolutionary small form factor
- The adapter offers the million fold proven robust latch lock system
- The adapters are problem solvers for various intermating problems for professional and semi-professional applications

Ordering Information

NE8FFX6-W

etherCON CAT6_A feedthrough adapter, rubber sealing protection, IP65



New ergonomic asymmetric locking release tab

Asymmetric Push – solution for space sensitive applications

NEW



NC5FAH-DA



NC3FBH1-DA



NCJ6FA-V-DA

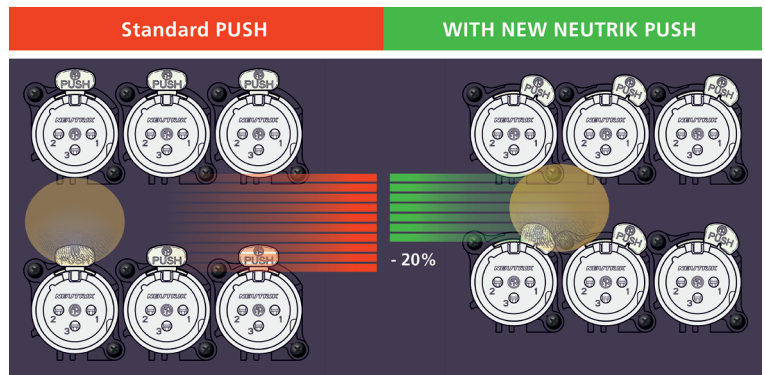


PUSH-ASYM

For space sensitive applications (e.g. plug-in modules and small portable devices), we have developed the asymmetric push tab. By using this new design, a vertical (stacking) space saving of approx. 20% can be achieved.

The new asymmetric push tab is being introduced on the products listed below. This reflects most possible combinations. Based on customer requests and quantity commitments, we can in the future release additional special versions with asymmetric push tabs within the NE8FA* series, NCJ*FI series, and DLX series. Reach out to Neutrik to discuss the possibilities and requirements for such additional parts.

For small quantities, you can order the asymmetric push tab as stand-alone accessory part (PUSH-ASYM) and combine it with every "-D" packaged product in the A-Series, AA-series, B-series, NE8FA* series, NCJ*FI series, and DLX series.



Space saving of appr. 20% can be achieved!

Ordering Information

NC3FAAH1-DA	NC3FAV1-DA	NC3FBH1-DA	NCJ6FA-H-DA
NC3FAAV1-DA	NC3FAV2-DA	NC3FBH2-DA	NCJ6FA-V-DA
NC3FAH1-DA	NC5FAH-DA	NC3FBV1-DA	PUSH-ASYM
NC3FAH2-DA	NC5FAV-DA	NC3FBV2-DA	



Ergonomic quick lock



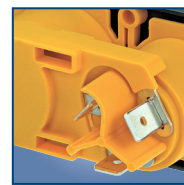
Bushing with securing key and sealing



Overmolded ready made cable



Screw terminals



1/4" flat tabs



ENEC certified

powerCON® TRUE1 – Lockable 16 A single phase connector



NAC3FX-W



NAC3MX-W



NAC3MPX

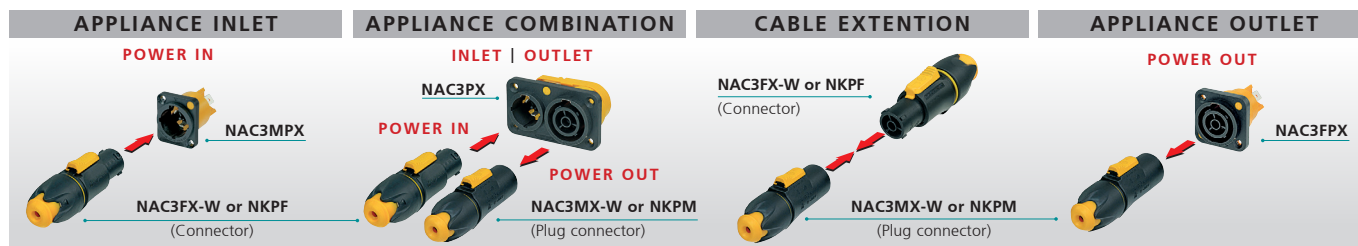


NAC3FPX



NAC3PX

- True mains connector with breaking capacity (CBC)
- Lockable 16 A (acc. ENEC, VDE) / 20 A (acc. single phase connector)
- Complete system with inlet and outlet connectors
- Unique duplex chassis connector – combines inlet and outlet coupler
- IP 65 – water resistant ready-made cord sets
- ENEC certified according to IEC 60320
- Easy and reliable locking system
- UL recognized components



Ordering Information

Cable Connector

NAC3FX-W	Mains cable connector, female CBC, screw terminals, IP 65
NAC3MX-W	Mains cable connector, male CBC, screw terminals, IP 65

Chassis Connector

NAC3FPX	Mains chassis connector female CBC, 1/4" flat tab terminals, power outlet
NAC3FPX-ST	Mains chassis connector female CBC, screw terminals, power outlet
NAC3MPX	Mains chassis connector male CBC, 1/4" flat tab terminals, power inlet
NAC3MPX-WOT	Mains chassis connector male CBC, 1/4" flat tab terminals, without insulation divider, power inlet
NAC3PX	Mains chassis duplex, 1/4" flat tab terminals



Quick lock



Neutrik bushing



3/16" flat tabs



Locking area on chassis connector



powerCON® – Locking 3 Pole Power Connectors



NAC3FCA



NAC3MPA-1



NAC3FCB



NAC3MPB-1



NAC3MM-1

- Lockable 3 pole single phase equipment (AC) connector
- High current capacity, rated at 20 A / 250 V ac
- Color coded for easy identification, powerCON offers power-in (blue) and power-out (grey) versions with different keying to avoid the possibility of intermating
- Fast and easy locking system
- Extremely robust and reliable
- Excellent cable retention
- UL, cUL recognized components (file no. E 135070) VDE certified (Reg. Nao. 6360)
- Coupler for linking cables (couples NAC3FCA to NAC3FCB)

COMBINATION & KEYWAYS



With the two non-interchangeable types of connectors (A type and B type) it is impossible to produce a short circuit. Mating connectors (combination) are identified by mechanical keyways and by color.



ATTENTION

The technical data of the powerCON connectors refer to connectors without breaking capacity, meaning connecting devices are not to be engaged and disengaged in normal use when live or under load.

Ordering Information

NAC3FCA	Cable connector, quick lock with securing lever, A-type for power inlet, screw terminals
NAC3MPA-1	Air tight chassis connector, A-type for power inlet, flat tab terminals, blue
NAC3MPA-1-WOT	Chassis connector, power-out, 3/16" flat tab terminals, blue, without insulation divider
NAC3FCB	Cable connector, quick lock with securing lever, B-type for power outlet, screw terminals
NAC3MPB-1	Air tight chassis connector, B-type for power outlet, flat tab terminals, grey
NAC3MPB-1-WOT	Chassis connector, power-out, 3/16" flat tab terminals, grey, without insulation divider
NAC3MM-1	Coupler for linking cables (couples NAC3FCA to NAC3FCB)

Liechtenstein (Headquarters)

NEUTRIK AG, Im alten Riet 143, 9494 Schaan
T +423 237 24 24, F +423 232 53 93, neutrik@neutrik.com

Germany / Netherlands / Denmark / Austria

Neutrik Vertriebs GmbH, Felix-Wankel-Strasse 1, 85221 Dachau, Germany
T +49 8131 28 08 90, neutrik@neutrik.de

Great Britain

Neutrik (UK) Ltd., Westridge Business Park, Cothey Way
Ryde, Isle of Wight PO33 1 QT
T +44 1983 811 441, sales@neutrik.co.uk

France

Neutrik France SARL, Rue du Parchamp 13, 92100 Boulogne-Billancourt
T +33 1 41 31 67 50, info@neutrik.fr

USA

Neutrik USA Inc., 4115 Taggart Creek Road, Charlotte, North Carolina, 28208
T +1 704 972 30 50, info@neutrikusa.com

Japan

Neutrik Limited, Yusen-Higashinibashi-Ekimaie Bldg., 3-7-19
Higashinibashi, Chuo-ku, Tokyo 103
T +81 3 3663 47 33, mail@neutrik.co.jp

Hong Kong

Neutrik Hong Kong LTD., Suite 18, 7th Floor Shatin Galleria
Fotan, Shatin
T +852 2687 6055, sales@neutrik.com.hk

China

Ningbo Neutrik Trading Co., Ltd., Shiqi Street, Yinxian Road West
Fengjia Villiage, Hai Shu District, Ningbo, Zhejiang, 315153
T +86 574 88250833, sales@neutrik.com.cn

India

Neutrik India Pvt. Ltd., Level 3, Neo Vikram, New Link Road,
Above Audi Show Room, Andheri West, Mumbai, 400053
T +91 982 05 43 424, anklesaria@neutrik.com

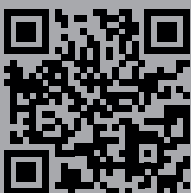
Associated companies

Contrik AG

Steinackerstrasse 35, 8902 Urdorf, Switzerland
T +41 44 736 50 10, contrik@contrik.ch

H. Adam GmbH

Felix-Wankel-Straße 1, 85221 Dachau, Germany
T +49 08131 28 08-0, anfrage@adam-gmbh.de



www.neutrik.com

FEATUURED PRODUCT