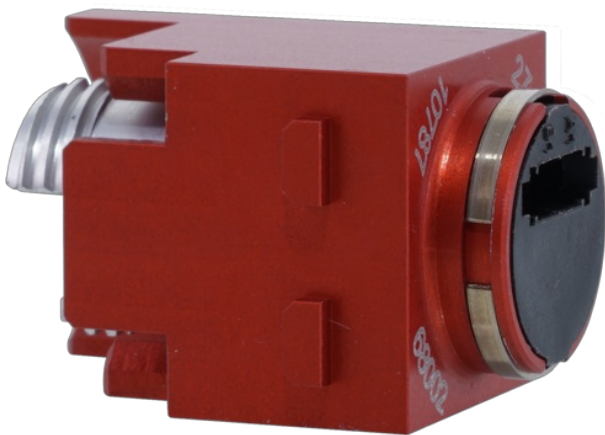


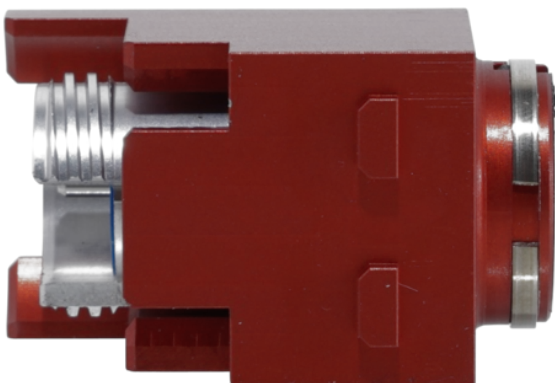


## FIBERFOX 2CH foxBRID

The FIBERFOX 2CH foxBRID is an expanded beam multimode hermaphroditic connector module and is suited for a vast array of industrial applications, including automation, robotics and railway. The innovative design ensures its ability for deployment in the toughest environments where constant performance and total reliability are critical. The module is designed according to the MIL-DTL-83526 standard and fits to other FIBERFOX solutions.

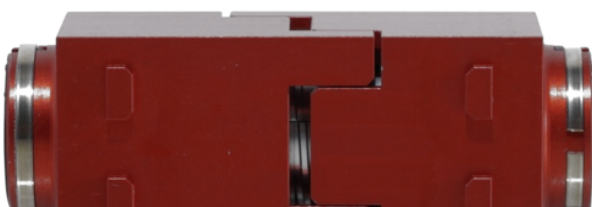
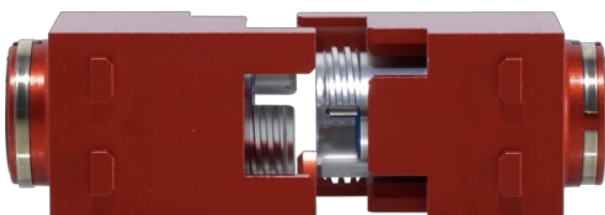


Benefiting from the expanded beam technology and the precision optical alignment the system creates high immunity against dust, mud, liquids and other contaminations. The FIBERFOX foxBRID module converts a standardized LC Patch cable into an expanded beam solution. It acts as a “feed-through” and fits into industrial standard shells.



For example:

- Han-Modular® Harting
- RockStar® ModuPlug Weidmüller
- Etc.





## Features & Benefits

- ✓ Very rugged plug face
- ✓ Very compact design - fits into industrial modular connectors
- ✓ Insensitive to electromagnetic influences
- ✓ Easy patching with common LC patch Cords
- ✓ No splicer, no expertise required for Installation
- ✓ Extremely service-friendly

## foxBRID 2CH

Order code	Product code	Description
1028480	NO2M4RW-FX	FIBERFOX EBC15 foxBRID module 2CH MM OM4

## Technical Information

Product	
Title	FIBERFOX 2CH foxBRID
Product code	NO2M4RW-FX
Gender	Hermaphroditic

**Mechanical**

Chassis Shape	Rectangular
Lifetime	> 10`000 mating cycles
Locking device	Screwed & Dependent to Modular locking device
Vibration	IEC 61300-2-1 & 61373
Shock	IEC 61373

**Material**

Insert	Steel
Shell	Aluminium
Shell plating	Hard anodized

**Environmental**

Flammability	UL 94 V-0
Protection class	IP 20
Compatibility	MIL-DTL-83526
Temperature range	-40° C to +85° C

**Optical**

Insertion loss	Typ. 0.9 db per connector / max. 1.45 db per connector
Optical connector	EBC
Optical wiring ISO / IEC 11801	ISO / IEC 11801