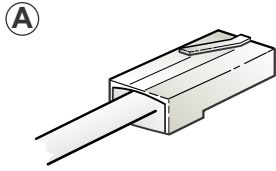


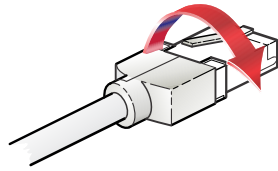


ASSEMBLY INSTRUCTION

etherCON | NE8MC, Ruggedized RJ 45 Data Connector

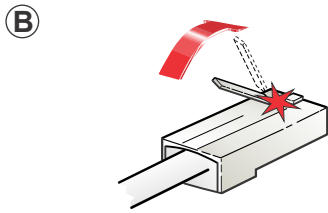


STANDARD VERSION

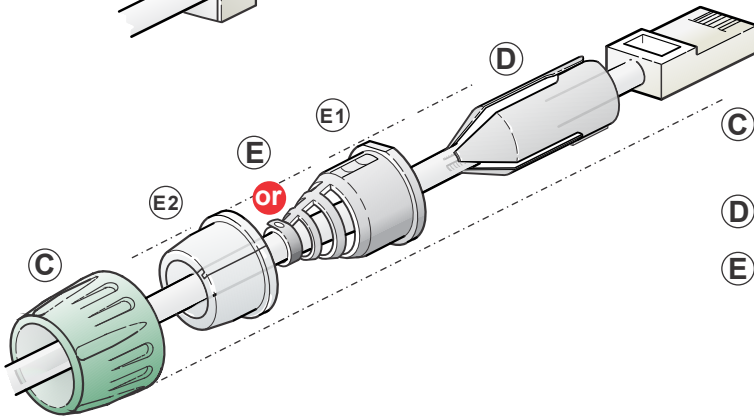


SPECIAL VERSION

A Special version: remove the cover



B Cut off the release tab of RJ45 plug

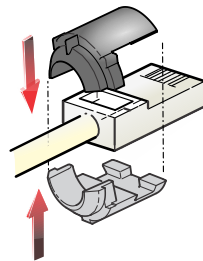


C Slide the bushing over the connector onto the cable.

D Put the chuck onto the cable.

E Put the suitable boot on the cable:
- E1: for cable O.D. up to 5 mm (0.2")
- E2: for cable O.D. up to 8 mm (0.3")

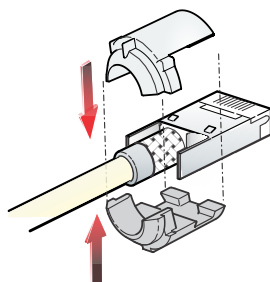
F1
STANDARD
VERSION



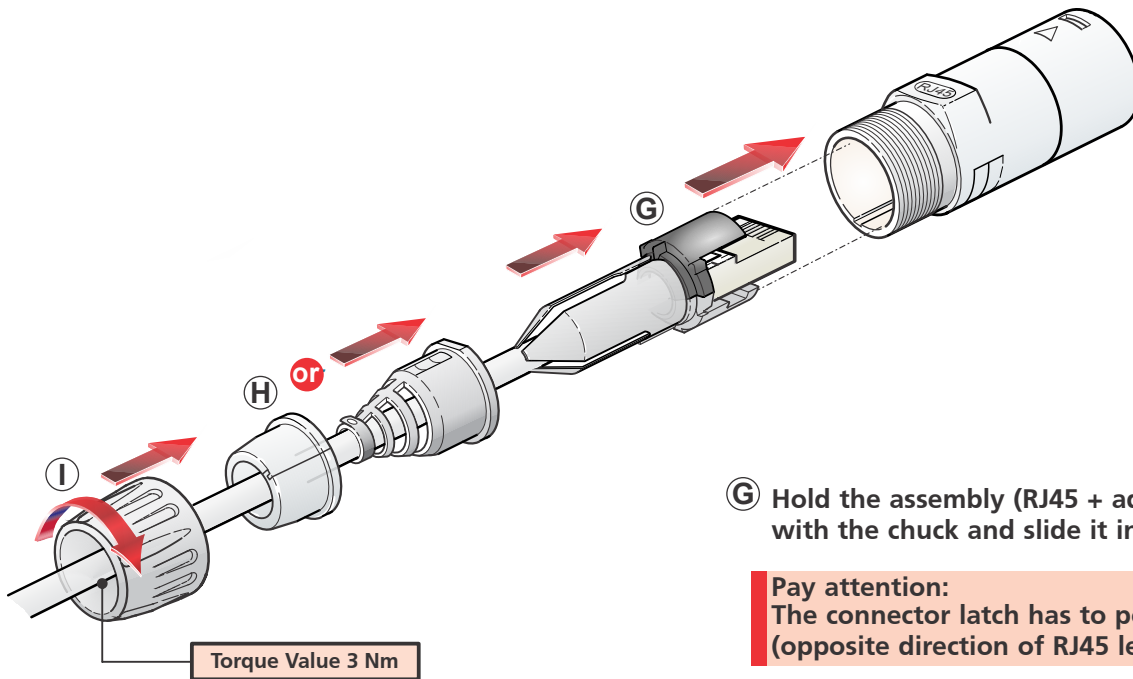
F1 Standard version:
Position the black & grey adapter onto the connector.

or

F2
SPECIAL
VERSION



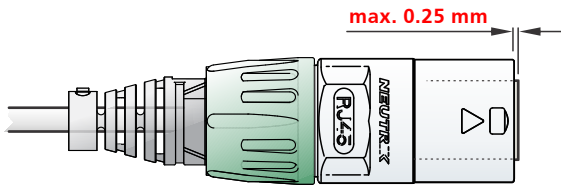
F2 Special version:
Position the white & grey adapter into the port.



G Hold the assembly (RJ45 + adapters) in place with the chuck and slide it into the housing.

Pay attention:
The connector latch has to point downwards (opposite direction of RJ45 lettering)

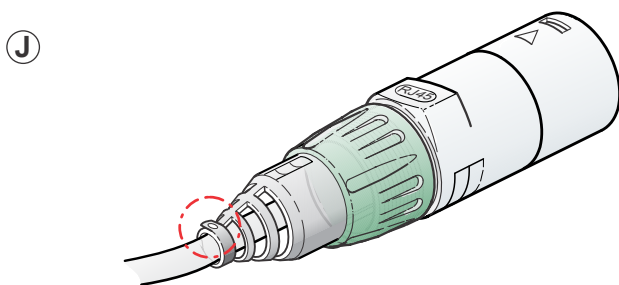
CAUTION:



max. 0.25 mm

H Slide the bushing and boot to the housing and **I** tighten the bushing (max. torque 3 Nm).

J Close the seal of the boot.



Find more etherCON® details on www.neutrik.com.

NEUTRIK AG	LI	T: +423/237 24 24	F: +423/232 53 93	NEUTRIK France	FR	T: +33 1/4131 6750	F: +33 1/4131 0511
NEUTRIK USA Inc.	USA	T: +1 704 / 972 3050	F: +1 704/438 9202	NEUTRIK Tokyo Ltd.	JP	T: +81 3/3663 4733	F: +81 3/3663 4796
NEUTRIK (UK) Ltd.	UK	T: +44 1983 / 811 441	F: +44 1983/811 439	NEUTRIK Hong Kong Ltd.	HK	T: +852/2687 6055	F: +852/2687 6052
NEUTRIK Vertriebs GmbH	DE/NL/AT/DK	T: +49 8131 / 280 890	F: +49 8131/280 830	NEUTRIK India Pvt. Ltd.	IND	T: +91/982 05 43 424	F: +91/22 26163 540